

Case Study

Procter & Gamble Ltd.

Tepla, Punjab

Project Detail

Area:	2,50,000.00 Sqft.
Method:	Fiber Reinforcement Concrete, Truss Screed With Laser Level, Ride On Trowel Finishing, Complete With Euco Diamond Liqui Hard With Polish And Treatment.
Client Name:	Deepak Mittal & Sourav Mittal
Project Head:	Hiralal
Civil Contractor:	Jindal Engineers & Contractor Suresh Jindal

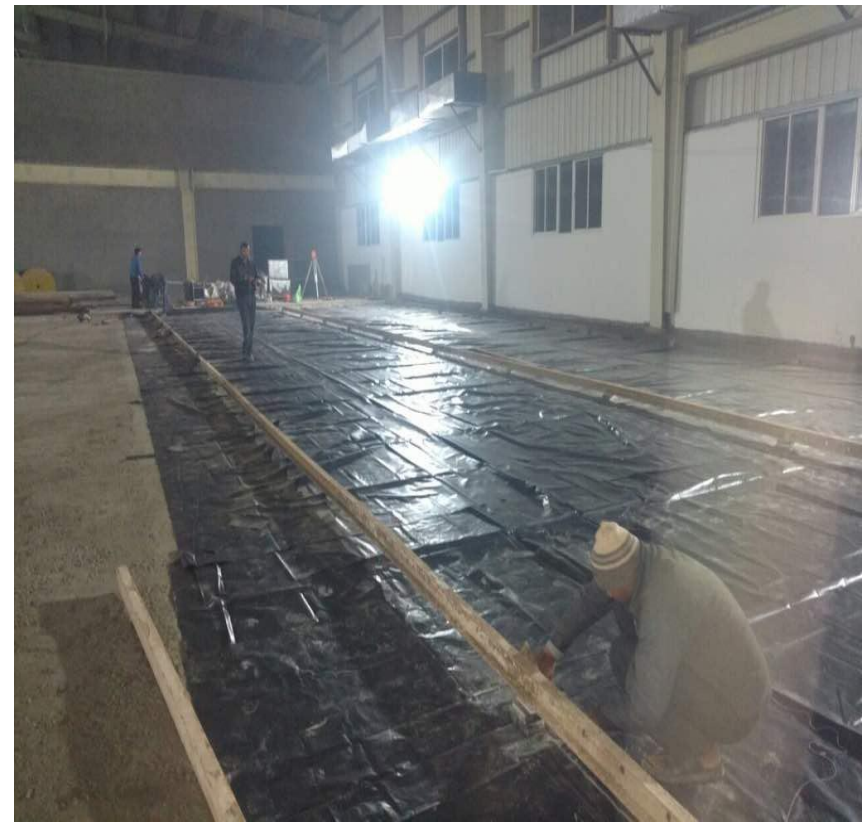
Original Specification

- Grade Concrete: M25
- Floor Thickness: 150mm
- Floor Hardener: Non Metallic 3Kg/Sqm
- Panel Size: 4m x 4m(Saw Cut)
- Joint Filler: Polysulphide

Specification Suggested By Yankit Consultant

- Grade Concrete: M25
- Floor Thickness: 150mm
- Floor Hardener: 4Kg/Sqm.
- Panel Size: 5m x 5m(Saw Cut)

Laying of Under Slab Vapor Barrier



Fiber And Admixture Dosing



Batching Plant Slump Cheak



Concrete Being Discharge In the Pannel



Truss Screed Is Under Process



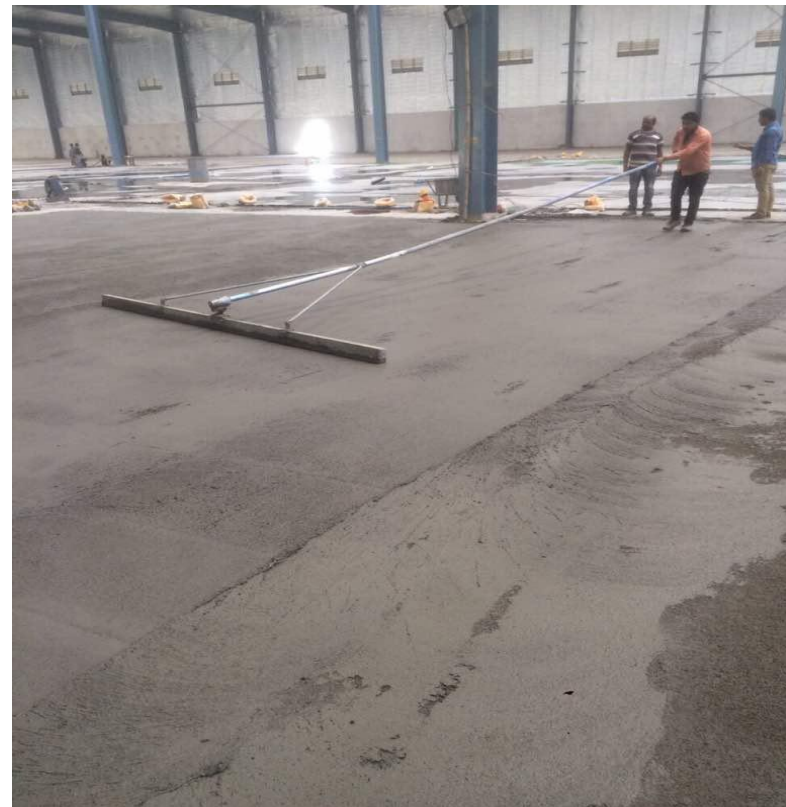
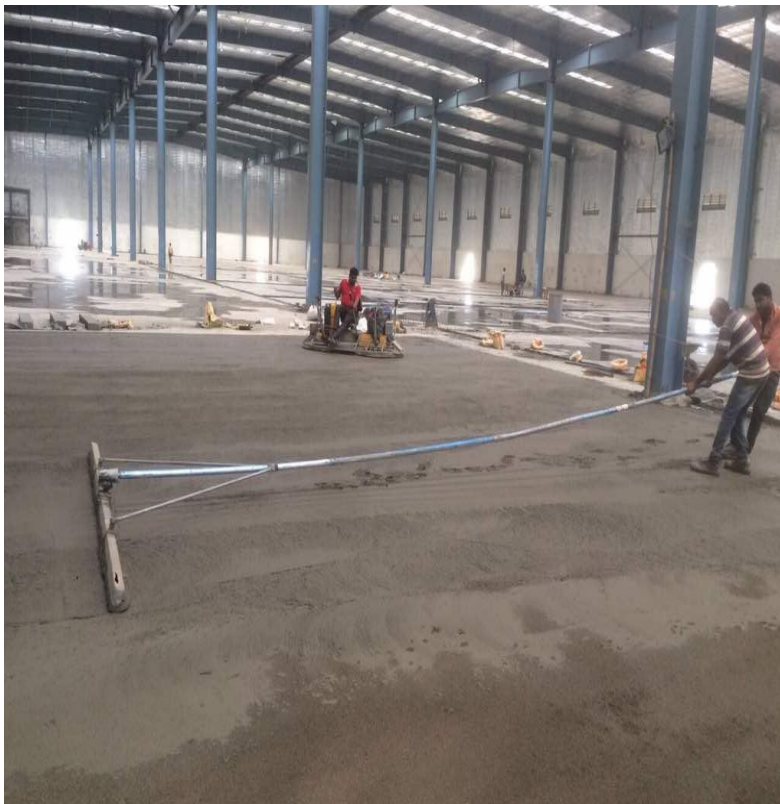
Laser Level Installation



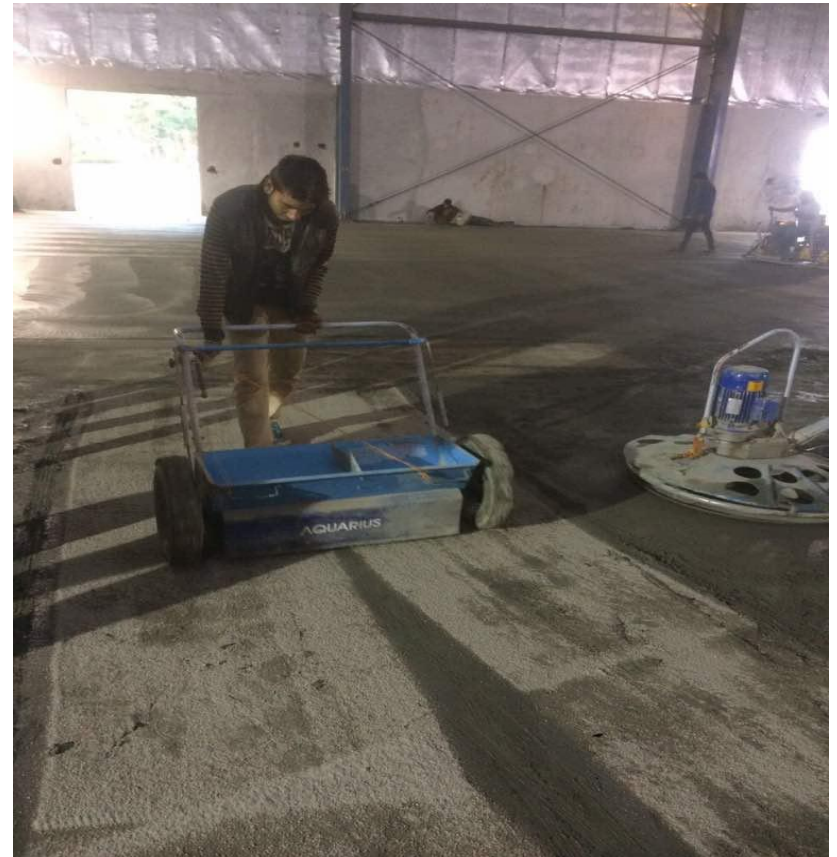
Pannel Side Touch Up Work



Uses Of Bumb Cutter To Remove The Excess Floor Level



Floor Hardener Under Application



Setting Of Hardener By Using Bull Floater



Initial And Final Process Of Disk Floater



Initial And Final Process Of Power Floater



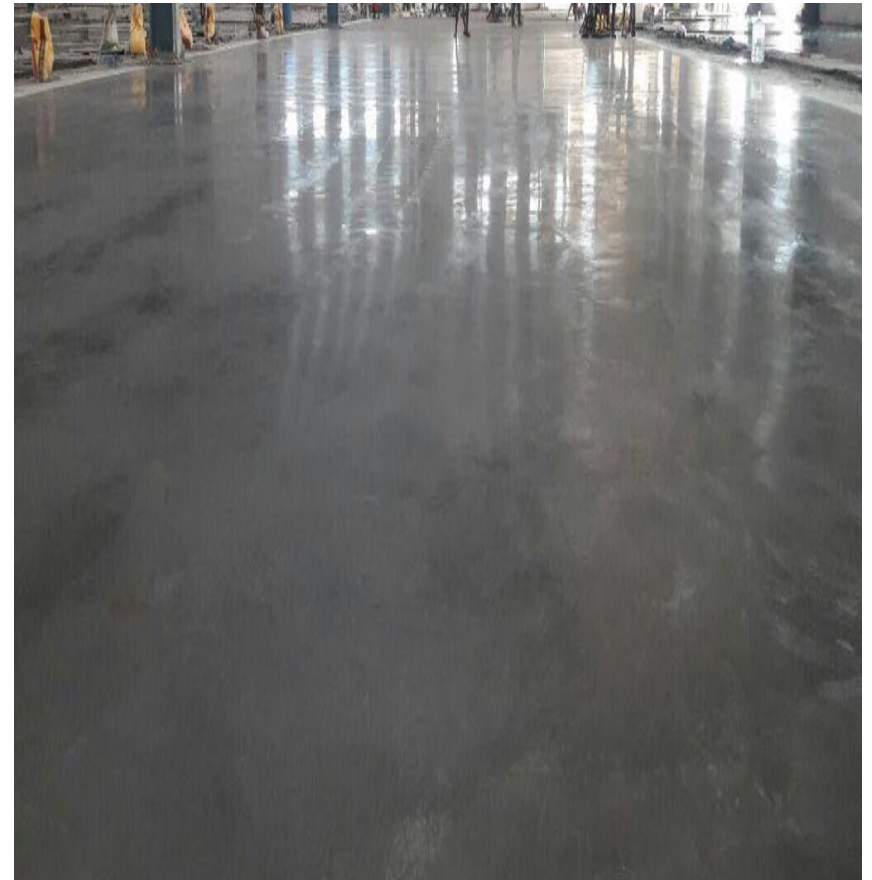
Finishing Work Of The Floor By Using Ride On Trowel



Final Finishing By Using Ride On Trowel



Final Floor Finished



EUCO Diamond Liqui Hard Process



Cleaning Process Of The Floor



Treated And Final Finished Floor

